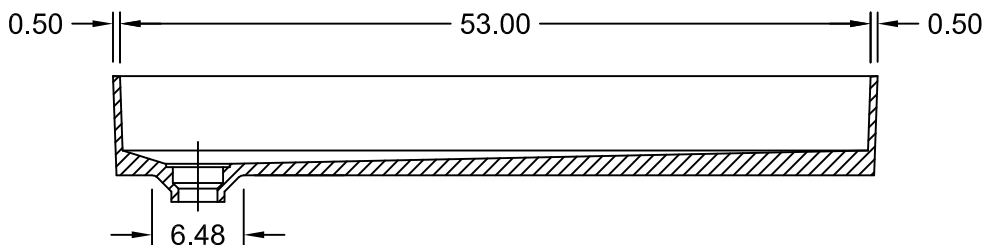
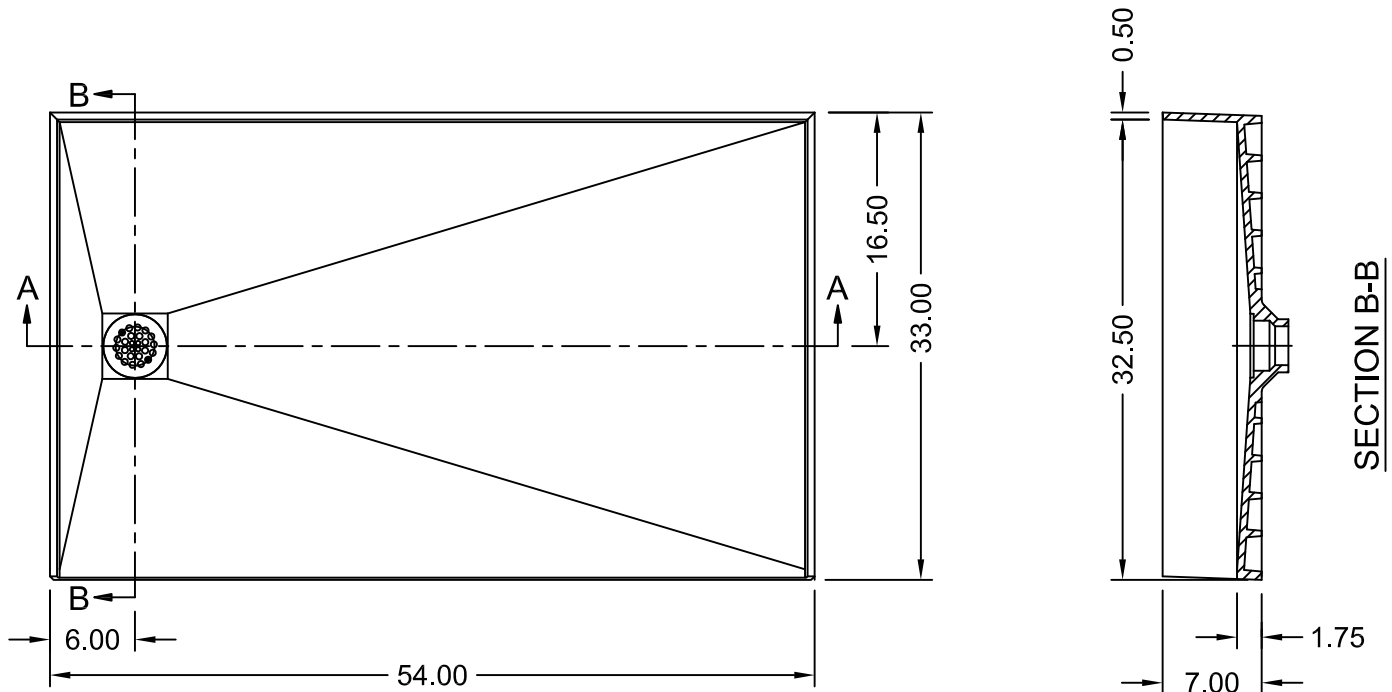




Barrier Free Tile Over Shower Pan 54"x 33"

Model # APR3354LBF Left drain



SECTION A-A

Product Features:

- .Integrated 2" PVC drain (adaptable to cast iron and ABS)
- .Integrated curb with structural ribbing
- .6" Splash Walls
- .Floor pre-pitched 1/4" per foot to drain
- .Tile set directly on pan surface
- .Round polished adjustable drain plate (square plates available)



ANSI Z124.1-95
ANSI Z124.2-95
ICC/ANSI A117.1.98

ASTM F462-79
B45.0-02
B45.5-02

Made in America

www.Accessible-Bathrooms.com

1-877-947-7769