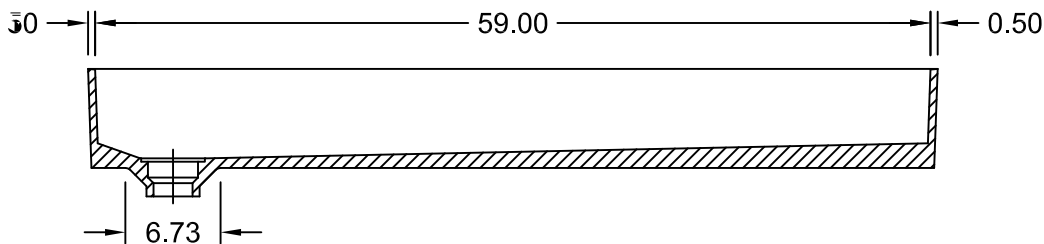
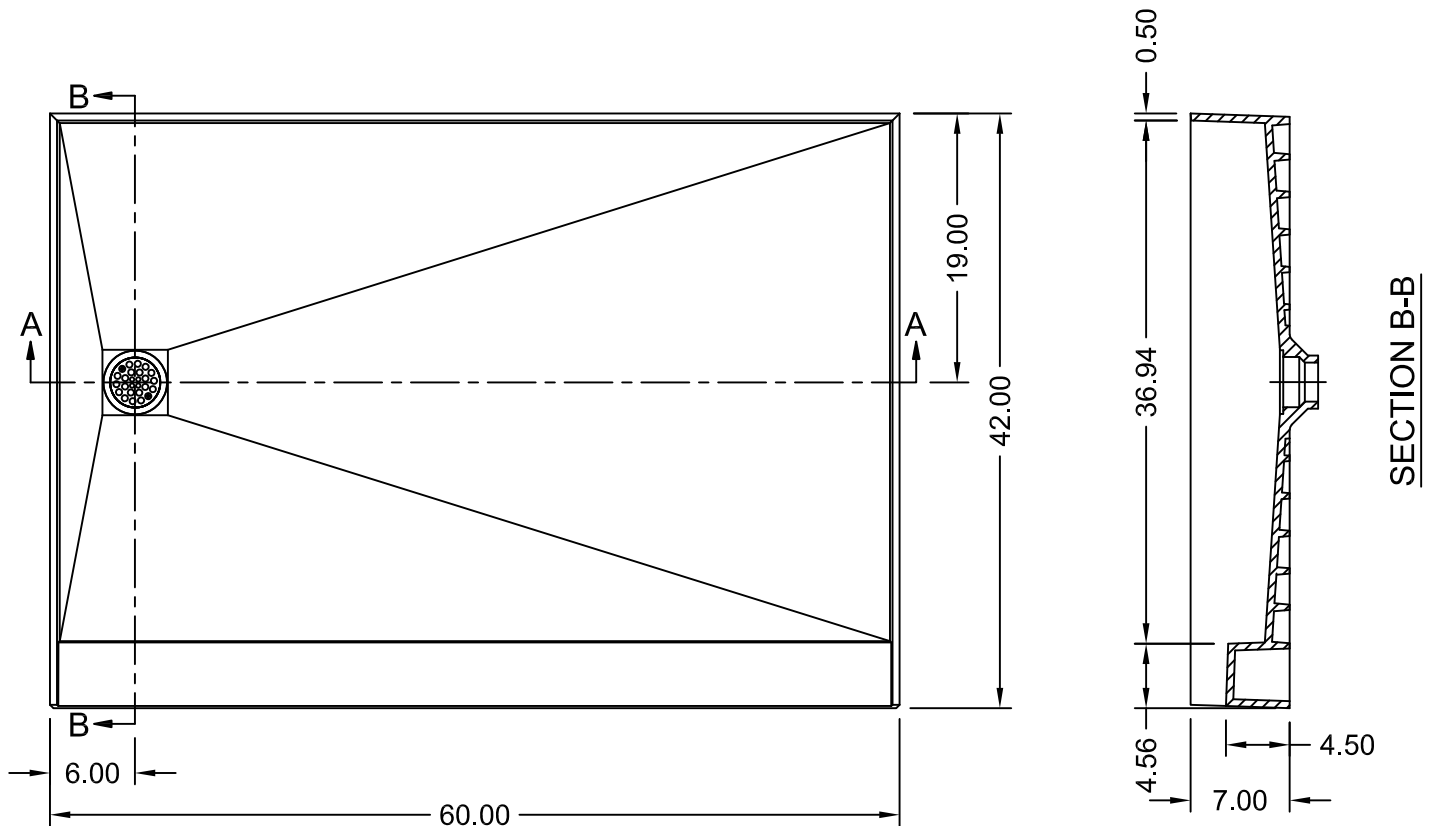




Tile Over Shower Pan 60"x 37" **Model # APR3760L Left drain** **Model # APR3760R Right drain**



SECTION A-A

Product Features:

- .Integrated 2" PVC drain (adaptable to cast iron and ABS)
- .Integrated curb with structural ribbing
- .6" Splash Walls
- .Floor pre-pitched 1/4" per foot to drain
- .Tile set directly on pan surface
- .No mud setting or hot mopping required
- .Round polished adjustable drain plate (square plates available)



ANSI Z124.1-95
 ANSI Z124.2-95
 ICC/ANSI A117.1.98

ASTM F462-79
 B45.0-02
 B45.5-02

Made in America

www.Accessible-Bathrooms.com

1-877-947-7769