

FLANGE TRIM KIT FOR INSTALLED SHOWERS INSTALLATION INSTRUCTIONS

TRIM INSTALLATION INSTRUCTIONS

For use to cover exposed mounting flanges on installed showers.

Review parts description shown at the right.

Note mitered ends will be used at the front top corner at each side.

Carefully measure parts before cutting.

Part A has squared ends and should be trimmed to fit over the top back mounting flange.

Part B has one mitered end. These parts will be used to cover the top side mounting flanges.

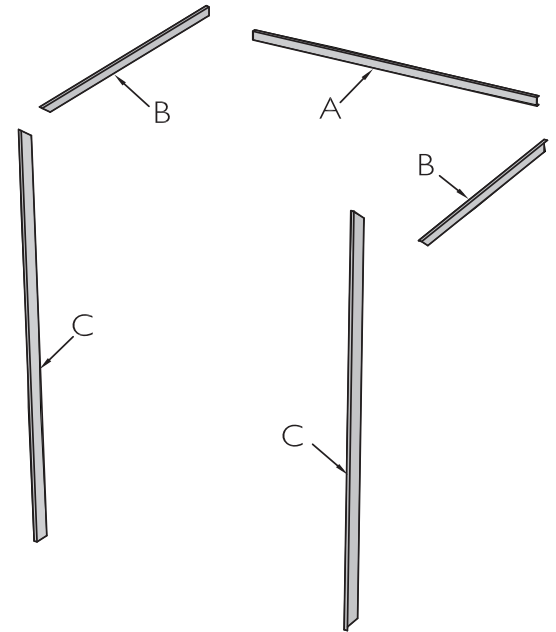
Part C has one mitered end. These are used to cover the front vertical mounting flanges.

Cut double sided tape into 2" long pieces and apply to the mounting flanges at 8" intervals, (Double tape if necessary).

Press the trim pieces in place. Repeat with all pieces.

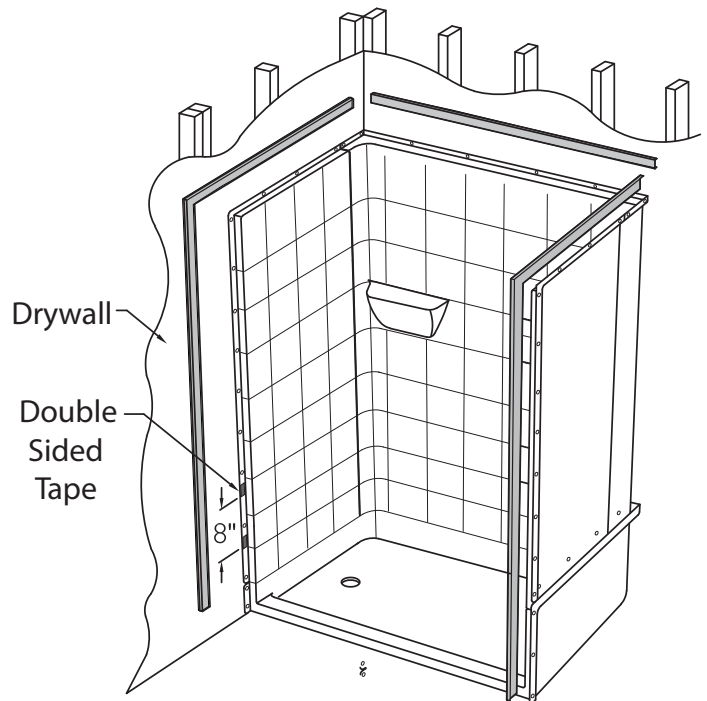
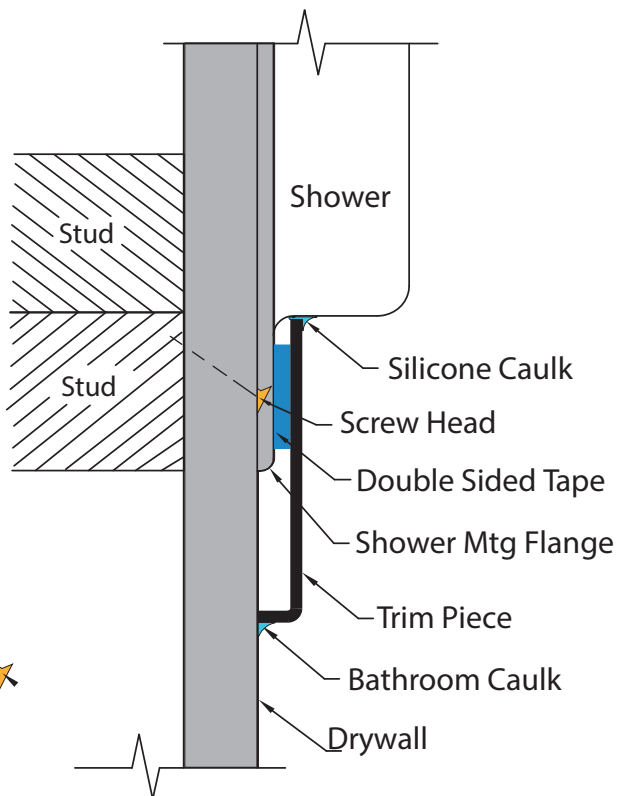
To finish, caulk all edges with silicone bathroom caulk.

Review enlarged top cross-section diagram below for an example of proper installation and finishing of the trim parts.



A - 67" x 3" x 3/8"	Square Ends	1-Req'd.
B - 43" x 3" x 3/8"	Mitered/Square	2-Req'd.
C - 83" x 3" x 3/8"	Mitered / Square	2- Req'd.

TOP CROSS SECTION DETAIL OF INSTALLATION



EXAMPLE OF TRIM INSTALLATION