

Freedom Accessible Shower 60" x 37"

Model
APF6036BF5PLR

60" x 37" x 78"

5-piece for remodeling

1" barrier free threshold
with pre-leveled and
reinforced shower base
for easy installation

Molded soap ledge

Durable, luxurious and easy
to clean applied acrylic with
8" tile pattern

Fully reinforced backing in
walls offers strength and
easy installation of
accessories

Accessories available:
Grab bars, folding shower
seat, collapsible water
retainer, weighted shower
curtain and rod, slide bar
with handheld shower,
pressure balance valve,
caulkless drain



- Shower shown with available accessories
- Shown right drain
- Shower stall comes standard in white
- Other wall configurations available
- Made in America
- Lifetime Limited Warranty



MODEL: APF6036BF5PLR

Freedom Accessible Shower

Submittal Data

Product Features

- 60" x 37" x 78"
- 5-piece for remodeling
- 1" barrier free threshold
- Self-supporting and pre-leveled shower base eliminates mud setting
- Fully reinforced backing in walls
- 8" Tile pattern easy to clean applied acrylic
- 3.5" bottom soap ledge depth
- Textured slip-resistant floor
- Left or Right drain location

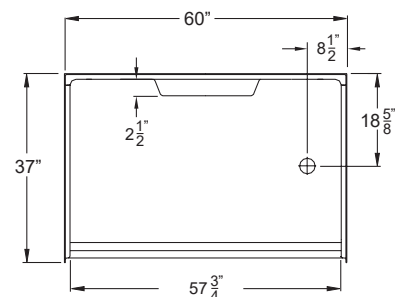
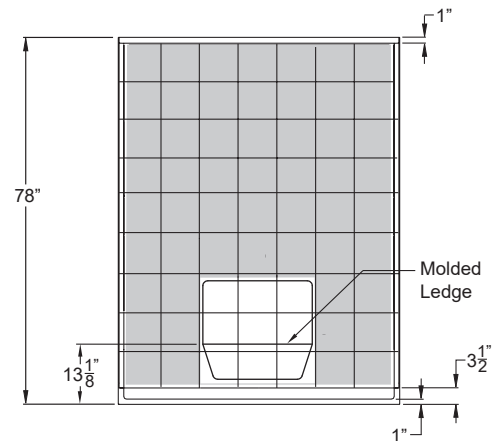
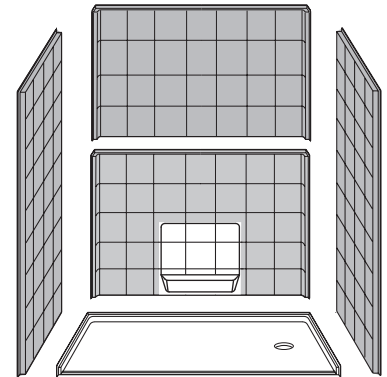
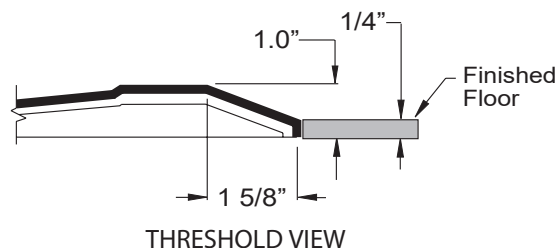
Code Compliance

- IPC International Plumbing Code
- UPC Uniform Plumbing Code
- ANSI Z124.2 Standards for Plastic Showers
- CSA

Optional Accessories (Installed at job site)

- Collapsible Water Retainer
- Folding Shower Seat
- Caulkless Drain
- Grab Bars
- Shower Rod and Curtain
- Pressure Balance Valve with hand-held

Shower and Slide Bar

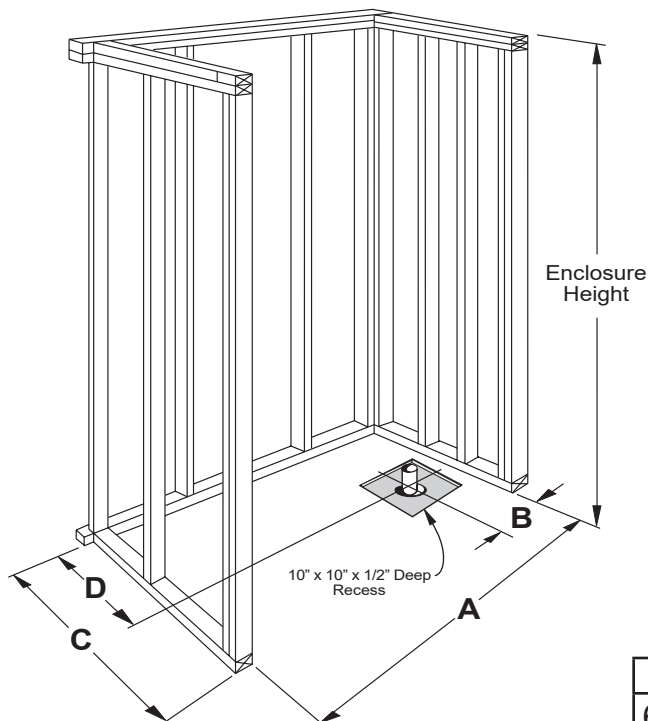
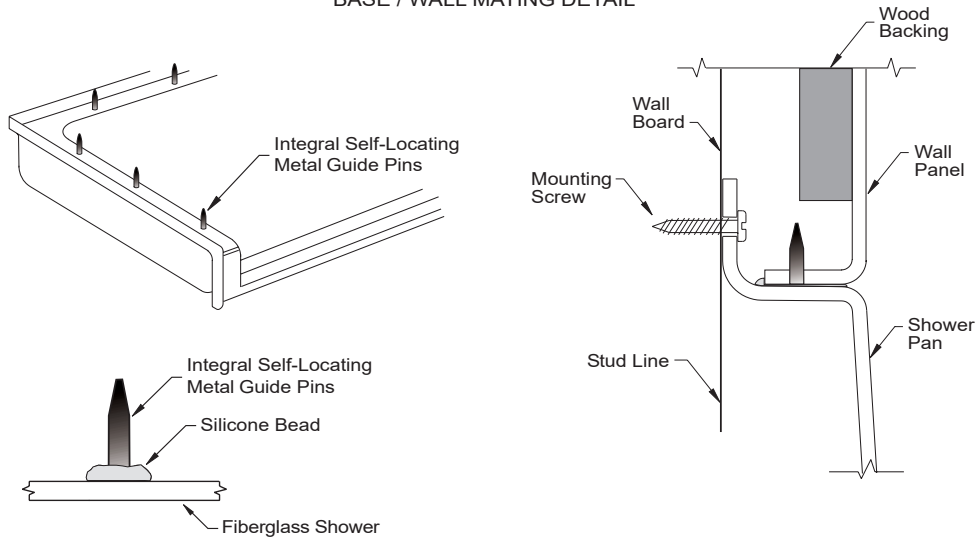


FREEOM SHOWERS

MODEL: APF6036BF5PLR

Freedom Accessible Shower Submittal Data - Installation

BASE / WALL MATING DETAIL



	A	B	C	D
6036 5P	60 1/4"	8 9/16"	37"	18 5/8"