

Freedom Resin Contour Seat – 18"

Comfort & Security – With durable stainless steel frames, Tested to exceed 500lbs

HH – Series

Contour
Shower Seat
18"

Application Use:

Architectural

Commercial

Institutional

Residential

Specifications

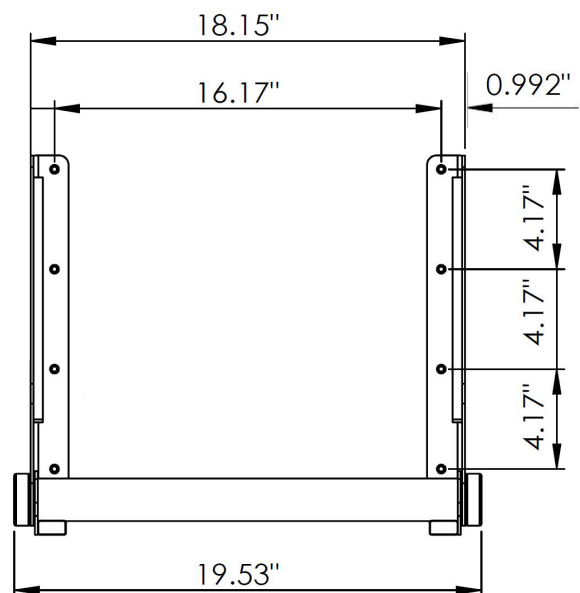
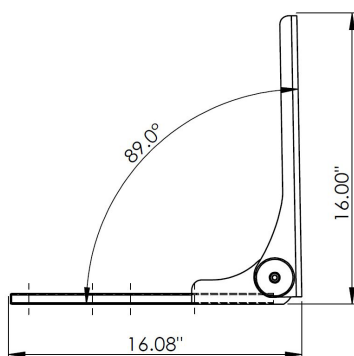
The contour shower seat is manufactured using high quality 12 gauge, type 304 stainless steel. The all stainless steel barrel of the seat allows the bottom to fold up and sit flat against the wall when not in use (2⁷/₈" projection when closed). 1" thick resin slats are durable and easy to keep clean. The two upper slats are removable to access the 8 wall mounting screw ports (2 1/2" stainless screws included). The installation of the contour seat is simple, easy, and quick. It is imperative when installing a shower seat to consult with a qualified contractor to insure you have the sufficient backing to support the seat.



MODEL # APHSS18BS (Frame Brushed satin finish)

MODEL # APHSS18PC (Frame Polished chrome finish)

Choose from a variety of finish colors available



Dimension tolerances $\pm 3/16"$

LuxeWood Collection

Birchwood



Coastal Gray



Driftwood Gray



Antique Mahogany



Walnut



Brazilian Walnut



White

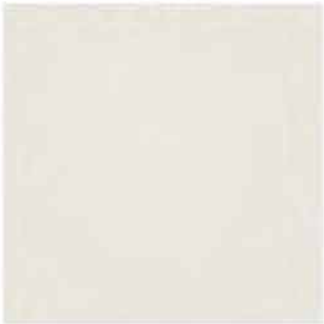


Light Gray



Mono-Color Collection

White



Light Gray



Gray



Patriot Blue



Black



Sand



Weathered Wood



Mahogany



All color options are durable, recyclable, high density polyethylene material