

## Freedom ADA Roll In Shower 63" x 34"



Shown with optional accessories    Handed by seat, left seat shown  
30 year limited warranty

Shower is ADA compliant when installed with available ADAAG accessories.

### Model

APFQ6334BF875

APF6334BF875

63" x 34" x 78.875"

ID: 60" x 30"

7/8" barrier free threshold  
with pre-leveled and  
reinforced shower base for  
easy installation

One piece for new  
construction

3 molded soap ledges

Durable, luxurious and easy  
to clean applied acrylic with  
tile pattern

Fully reinforced walls offer  
strength and easy installation  
of accessories

ADA compliant accessories  
available: grab bars, folding  
shower seat, collapsible water  
retainer, weighted shower  
curtain and rod, slide bar with  
handheld shower, pressure  
balance valve, caulkless drain

# FREEOM SHOWERS

## MODEL: APFQ6334BF875, APF6334BF875

### Submittal Data

#### Product Features

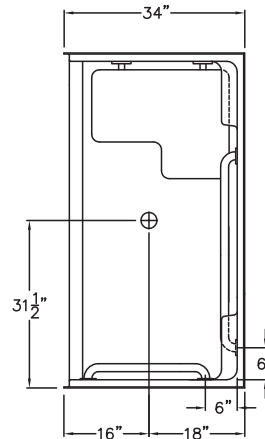
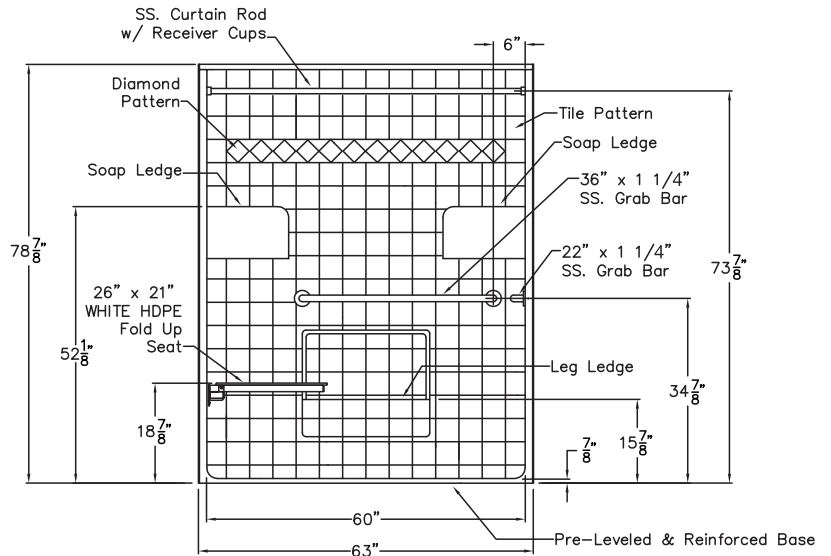
- 63" x 34" x 78.75"
- 7/8" barrier free threshold
- Self-supporting and pre-leveled shower base eliminates mud setting
- Fully reinforced walls
- Tile pattern easy to clean applied acrylic
- 3 molded soap ledges
- Textured slip-resistant floor
- Center drain location
- 30 yera limited warranty

#### Code Compliance

- IPC International Plumbing Code
- UPC Uniform Plumbing Code
- ANSI Z124.2 Standards for Plastic Showers
- ADA Accessibilty Guidelines for Buildings and Facilities
- ANSI A117.1 Accessible and Useable Buildings and Facilities
- MAS
- TAS
- CSA

#### Optional Accessories (Installed at job site)

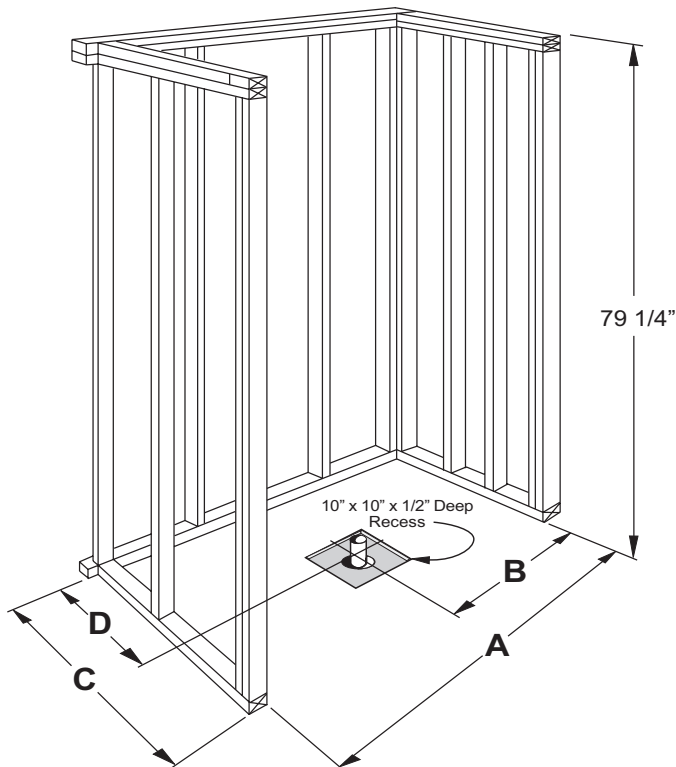
- Collapsible Water Retainer
- Folding Shower Seat
- Caulkless Drain
- Grab Bars
- Shower Rod and Curtain
- Pressure Balance Valve with hand-held Shower and Slide Bar



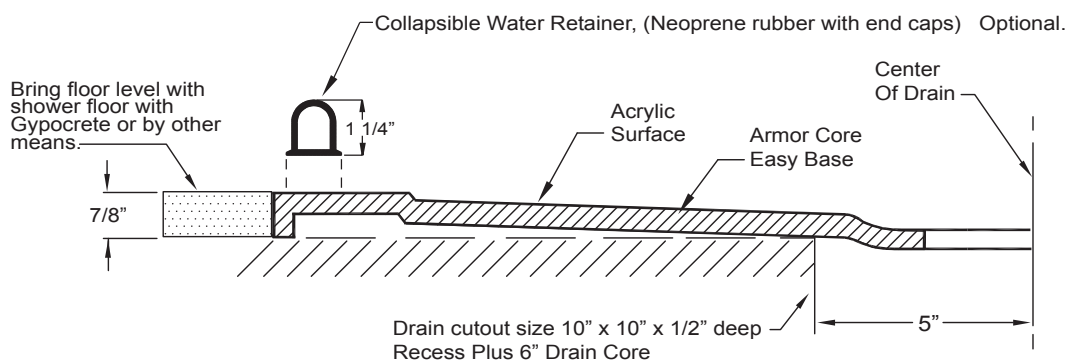
Handed by seat, left seat shown  
With optional ADA accessories

# FREEOM SHOWERS

## MODEL: APFQ6334BF875, APF6334BF875 Submittal Data - Installation



	A	B	C	D
APF6334	63 1/4"	31 5/8"	34"	18"



### Detail Of Threshold