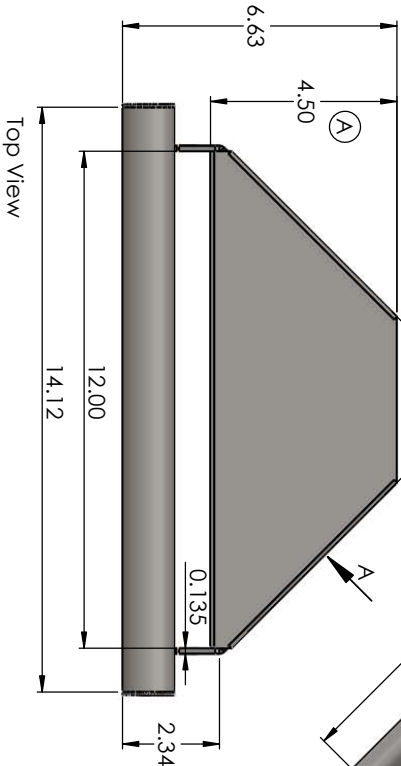
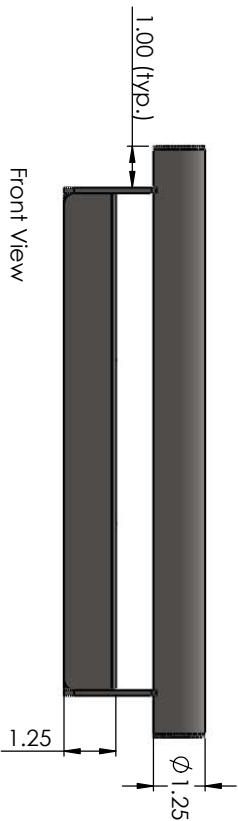


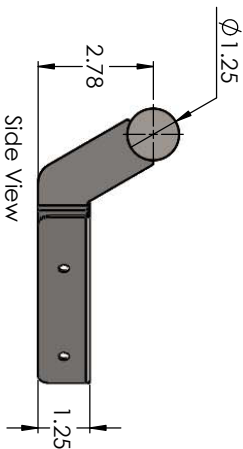
Isometric View



Top View



Front View



Side View

REVISIONS		
REV.	DESCRIPTION	DATE
A	Reduced depth by 1/2" to accommodate 1-1/4" Corner Radius.	02-13-15

UNLESS OTHERWISE SPECIFIED:		
DIMENSIONS ARE IN INCHES	DRAWN	NAME
TOLERANCES:	CHECKED	DATE
FRACTIONS: 1/2" 3/4" 1"	ENG APPR.	03-13-15
ANGULAR MATCH: 1/2" 3/4" 1"	ENG APPR.	
THREE PLACE DECIMAL: 1/2" 3/4" 1"	Q.A.	
INTERPRET GEOMETRIC TOLERANCING PER:	COMMENTS:	
MATERIAL: 16ga (0.060) Stainless		
FINISH: Satin Stainless		
NEXT ASSY:	USED ON:	
APPLICATION:	DONOT SCALE DRAWING	

MODEL: APFW-SC306-1406-SS

TITLE: Corner Shower Shelf
12" Shelf x 4-1/2" w/ 14" Handle
Satin Stainless

SIZE: DWG. NO. B
W-SC306-1406-SS_a

SCALE: 1:5 WEIGHT: SHEET 1 OF 1