

## Freedom ADA Transfer Shower 40" x 39"



Model  
APFQ3637BF3P-RRF

40" x 39" x 77 5/8"  
36" x 36" Inside Dimension

5/8" barrier free threshold  
with pre-leveled and  
reinforced shower base  
for easy installation

Three piece for remodeling

Durable, luxurious and easy to  
clean applied acrylic

Fully reinforced walls offer  
strength and easy installation  
of accessories

Dual recessed receiver flanges  
for 48" clear floor space

ADA accessories available:  
Grab bars, folding shower  
seat, collapsible water  
retainer, weighted shower  
curtain and rod, slide bar with  
handheld shower, pressure  
balance valve, caulkless drain

Shown with optional accessories  
Lifetime limited warranty

Handed by valve, right valve shown

Shower is ADA compliant when installed with  
available ADAAG accessories.

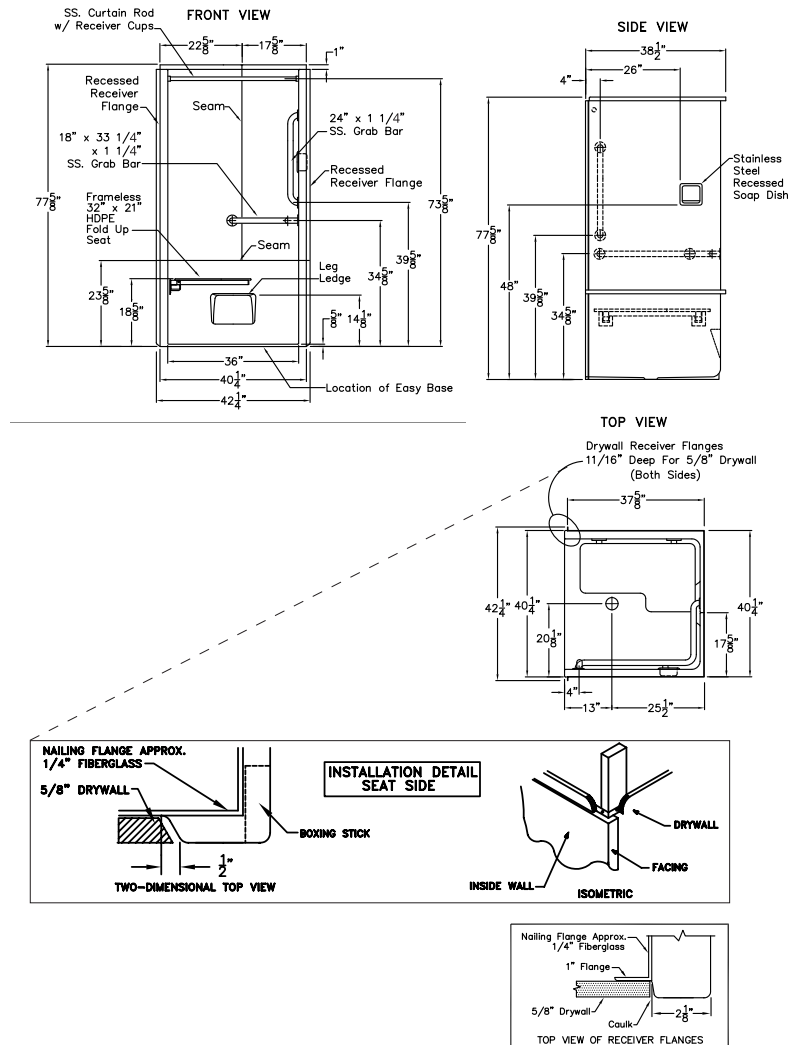
# FREEDOM SHOWERS

## MODEL: APFQ3637BF3P-RRF ADA Transfer Shower

### Submittal Data

#### Product Features

- 40" x 39" x 77 5/8"
- 5/8" barrier free threshold
- Self-supporting and pre-leveled shower base eliminates mud setting
- Fully reinforced walls
- Easy to clean applied acrylic
- Textured slip-resistant floor
- Center drain location
- Lifetime manufacturer limited warranty



#### Code Compliance

- IPC International Plumbing Code
- UPC Uniform Plumbing Code
- ANSI Z124.2 Standards for Plastic Showers
- ADA Accessibility Guidelines for Buildings and Facilities
- ANSI A117.1 Accessible and Useable Buildings and Facilities
- CSA approved
- MAS
- TAS
- Dual recessed receiver flanges

#### Optional Accessories

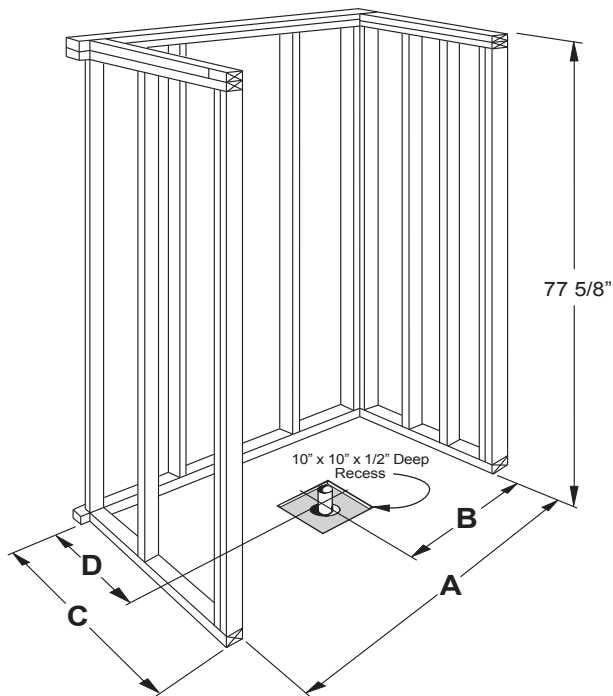
- Collapsible Water Retainer
- Folding Shower Seat
- Caulkless Drain
- Grab Bars
- Shower Rod and Curtain
- Pressure Balance Valve with hand-held Shower and Slide Bar



# MODEL: APFQ3637BF3P-RRF

## Freedom ADA Transfer Shower

### Submittal Data - Installation



	A	B	C	D
APF3637	40 1/2"	20"	39"	25"

