



ACCESSIBILITY PROFESSIONALS
ADA SHOWERS

ADA Roll-in Shower APTG6239BF875L



Shower shown with some available factory installed accessories

Left handed unit shown

Comes standard in white

62" x 39 1/2" x 78 7/8"

60" x 36" inside dimension

1 piece for new construction

7/8" barrier free threshold with pre-leveled and reinforced shower base for easy installation.

Textured Floor

Reinforced backing in walls offers strength and easy installation of accessories

Model includes:

- 2 molded soap ledges

Accessories available:

- 2 grab bar
- frameless white hdpe fold up seat
- curtain rod and drain.
- collapsible water retainer
- weighted shower curtain
- handheld shower glide bar kit with pressure balanced valve.

Durable, luxurious and easy to clean applied acrylic with smooth wall finish.

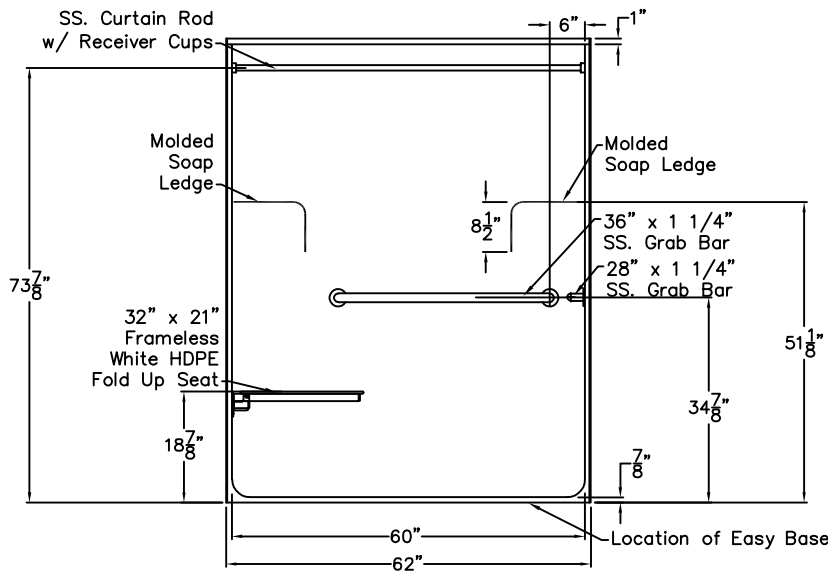
Shower is ADA compliant when installed with available ADAAG accessories.

Made in America

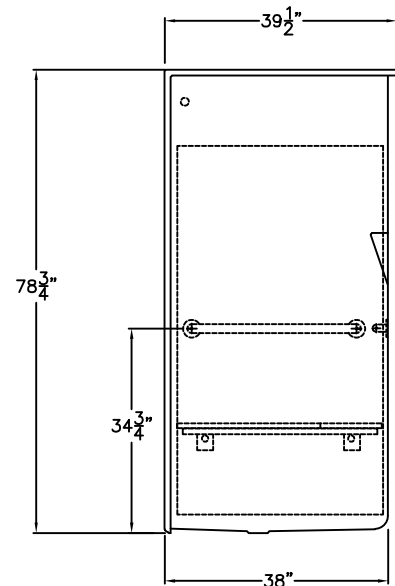
Freedom Showers

SUBMITTAL DATA

FRONT VIEW



SIDE VIEW



Roll-In Shower Stall

The shower enclosure shall be APG model 6239 BF .875 left. Finished surface shall be of an applied acrylic. The base shall be attached to the sump of the unit in such a manner to form an integral part with an inner and outer coating of polyester resin. The unit shall have outside dimensions of 62" x 39 1/2" x 78 7/8". The unit meets ANSI Z124.1.2, CSA B45.5, and HUD-UM73.

This enclosure may be equipped with the following installed accessories:

- 1) One 36" x 1 1/4" diameter stainless steel horizontal grab bar on the back wall, 2) 28" x 1 1/4" diameter stainless steel horizontal grab bar opposite the seat, both with 1 1/2" statute clearance, mounted with stainless steel bolts, and secured from the rear with 3" x 3" x 11 gauge metal mounting plates, 3) 32" x 21" frameless white HDPE fold up seat, 4) One inch diameter, 18 gauge stainless steel curtain rod with receiver cups, 5) Full wood backing on all walls, 6) Armor Core Easy Base, 7) 7/8" threshold.

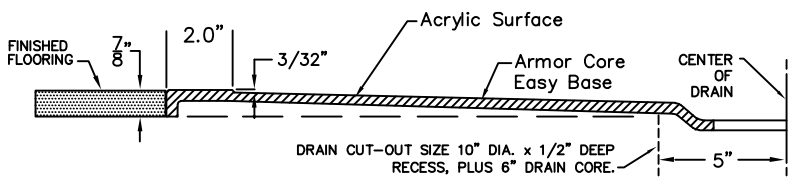
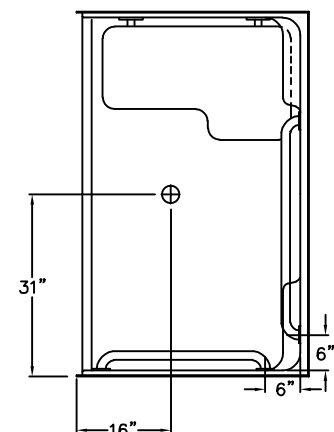
NOTE: OPTIONAL RECESSED SOAP DISH IS REQUIRED FOR ADA AND ICC/ANSI A117.1 CODE COMPLIANCE.

Available Options: 8) Recessed soap dish, 9) Valve package, 10) anti-bacterial shower curtain and hooks,

This unit features the outside dimensions of 62" of overall width. This does not allow for full enclosure of the bolts that are used to secure the bars and seat in place. This may require the need to notch studs to allow for bolt clearance for installation. For a dry wall enclosed fire wall installation, adjustment of the wallboard may be necessary to provide clearance of the bolts while maintaining the integrity of the drywall fire wall enclosure.

NOTE: THIS UNIT WILL NOT ACCEPT A DOOR.

TOP VIEW



STATE HANDING WHEN ORDERING
HANDED BY THE SEAT
Left Hand Shown, Right Available

DUE TO THE NATURE OF THE MATERIALS
DIMENSIONS MAY VARY ± 1/2"

ACCESSIBILITY PROFESSIONALS

Approved By Print Name:

Drawing#: APT G 6239 BF .875 HBW HSW
FHDP CR FWB Easy Base

Approved By Signature:

Date:

Date: 10-8-08

Revised: 11-19-20

Rep.:

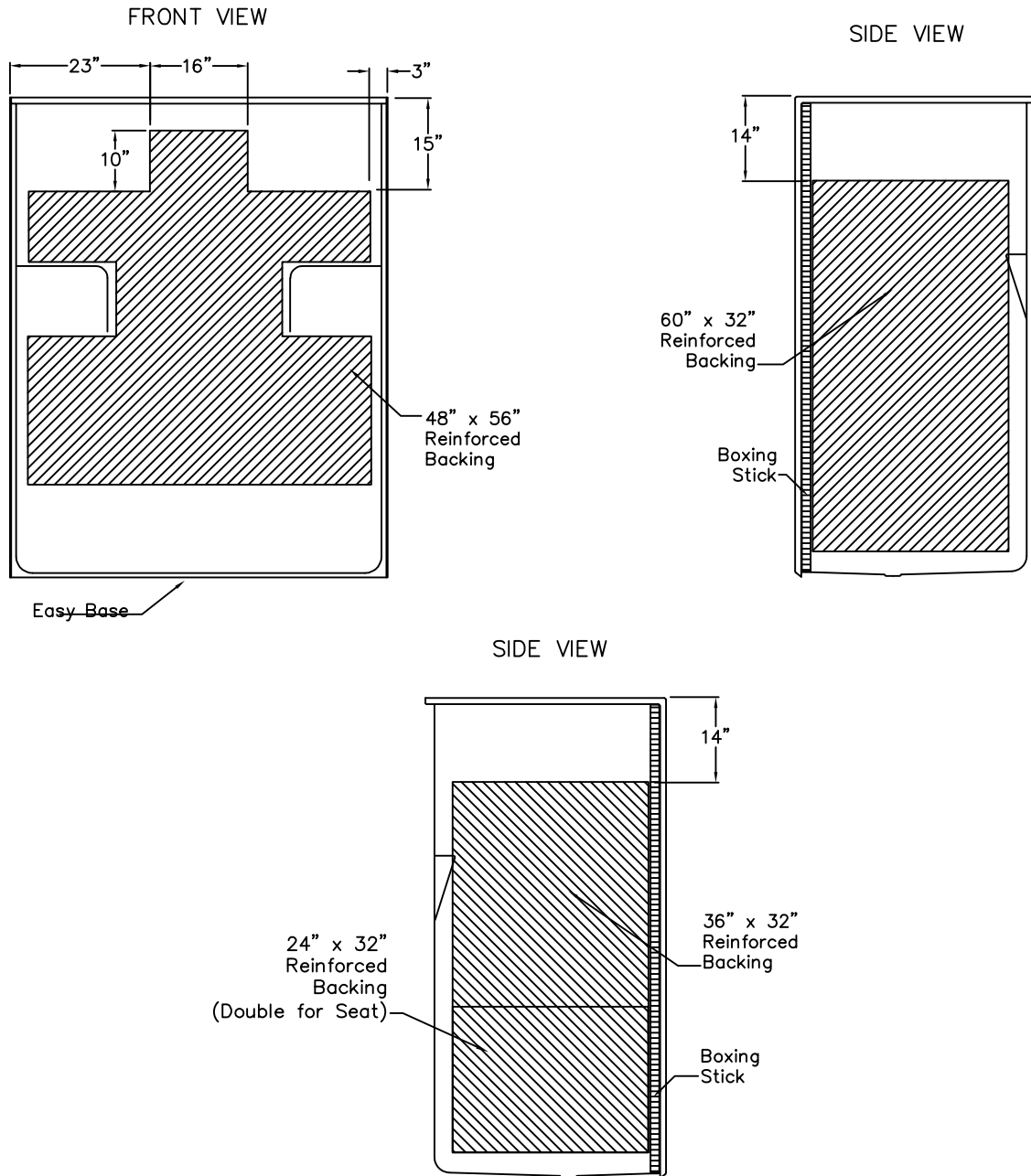
Wholesaler:

Quote No.:

ACCESSIBILITY PROFESSIONALS
4 ALLIANCE BLVD. UNIT 123 BARRIE, ONTARIO CANADA L4M 7G3
1 (877) 947-7769 - www.FreedomShowers.com

Backing Placement

SUBMITTAL DATA



DUE TO THE NATURE OF THE MATERIALS
DIMENSIONS MAY VARY $\pm 1/2"$

Job Name:	ACCESSIBILITY PROFESSIONALS		
Approved by Print Name:	Drawing#: APT G 6239 BF .875 HBW HSW FHDP CR FWB Easy Base-BP		
Approved by Signature:	Date:	Date: 12-16-99	Revised: 11-19-20
Rep.:	Wholesaler:	Quote No.:	

ACCESSIBILITY PROFESSIONALS
4 ALLIANCE BLVD. UNIT 123 BARRIE, ONTARIO CANADA L4M 7G3
1 (877) 947-7769 - www.FreedomShowers.com